

# Sound Insulation Prediction (v8.0.11)

Program copyright Marshall Day Acoustics 2015

Mohawk Industries, Inc. - Key No. 3767

Margin of error is generally within  $R_w \pm 3$  dB

Job Name:

Job No.:

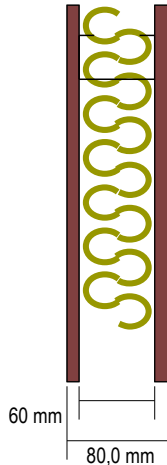
Page No.:

Notes:

Date: 24 nov 16

Initials:

File Name: Clickwall metalstud 60mm 2 sided clickwall.ixl



$R_w$	39 dB	
C	-3 dB	
$C_{tr}$	-9 dB	
$D_{nTw}$	41 dB	[V:50m3] [A:11m2]

## System description

Panel 1 : 1 x 10,0 mm Clickwall mdf comfort ( $\rho$ :838 kg/m<sup>3</sup>,E:3,3GPa, $\eta$ :0,02,  $\rho_s$ :8,38 kg/m<sup>2</sup>,  $f_c$ :3269 Hz)

Cavity: Steel stud (0.55mm): Stud spacing 600 mm , Infill Fibreglass (10kg/m<sup>3</sup>) Thickness 50 mm ( $\rho$ :10 kg/m<sup>3</sup>, Rf:4000 Pa.s/m<sup>2</sup>)

Panel 2 + 1 x 10,0 mm Clickwall mdf comfort ( $\rho$ :838 kg/m<sup>3</sup>,E:3,3GPa, $\eta$ :0,02,  $\rho_s$ :8,38 kg/m<sup>2</sup>,  $f_c$ :3269 Hz)

Mass-air-mass resonant frequency =108 Hz

Panel Size 2,7x4 m; Mass 17,3 kg/m<sup>2</sup>

frequency (Hz)	R(dB)	R(dB)
50	16	
63	16	16
80	16	
100	15	
125	14	16
160	19	
200	25	
250	30	28
315	35	
400	39	
500	43	42
630	47	
800	50	
1000	55	53
1250	58	
1600	59	
2000	60	59
2500	58	
3150	50	
4000	55	53
5000	59	

